

# 113 North Gate

## Local Heritage Asset Register

### Berridge

HA590



<b>Status:</b>	Recommendation to add
<b>Age:</b>	Georgian (1714-1837)
<b>Conservation Area:</b>	No
<b>Date added to the list:</b>	
<b>Condition:</b>	Bad

### Assessment against Local Criteria

1. Age: pre-1840
2. Good example of a multi-purpose house and workshop with domestic scale Lace Production

### Reason for Designation

Good example of a remnant of domestic scale Lace Production in the areas outside the Georgian Town of Nottingham. Quite altered suggesting that it would not be a candidate for national listing. In a group with HA589.

 Local List Proposal



### Description

c18th century (?) cottage with weavers workshop windows and Bulwell Stone frontage. 19th century lace factory extension to rear. Lawrence George Summers was the architect for the factory from Watson Fothergill's practice. Summers designed for James Allen in 1882. Lawrence George Summers was the architect for the factory from Watson Fothergill's practice. Summers designed for James Allen in 1882.

# 113 North Gate

## Local Heritage Asset Register

Berridge

HA590

Additional Description:

Heritage category:	Building
Asset type:	Industrial
Original use:	
Current use:	Industrial
Currently occupied:	Yes
Architect, style / material:	Lawrence George Summers
Condition:	Bad

Part of a group of heritage assets:

Yes

Associated with historical events or people:

Is it associated with any buried remains or archaeology? If so please describe:

How is it of importance to the local community? :

<b>Selection Panel Date:</b>	<b>Date added to the list:</b>
02/04/2019	

# Cattle Market Lodge Cattle Market Road

## Local Heritage Asset Register

### Meadows

HA594



<b>Status:</b>	Recommendation to add
<b>Age:</b>	Victorian (1837-1901)
<b>Conservation Area:</b>	No
<b>Date added to the list:</b>	
<b>Condition:</b>	

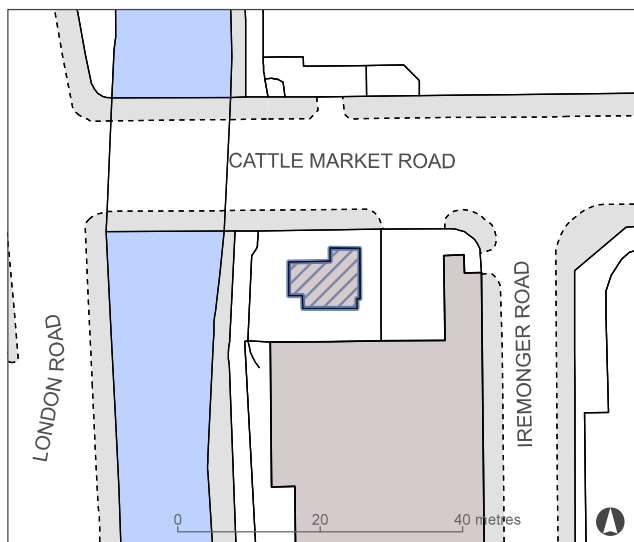
### Assessment against Local Criteria

1. Age: pre 1914
2. Good aesthetic quality
3. Possibly associated with Marriot Ogle Tarbotton
4. Good example of a lodge

### Reason for Designation

Good example of a pair of pre-enclosure cottages disconnected from Trowell Road by modern development. Part of a group with HA458-9, HA461, HA628-35.

### Local List Proposal



### Description

Cattle Market Lodge - cottage marked as the Lodge on current maps with potential historic association with the cattle market. Red brick cottage from the turn of the 20th century with good aesthetic value, e.g. bargeboards, sandstone details including string courses and window surrounds, high quality chimneys and patterned coursing to the ceramic tile roof. Similar detailing to the Cattle Market Tavern HA596 suggesting it might have been designed by Mariott Ogle Tarbotton before his death in 1887.

# Cattle Market Lodge Cattle Market Road

## Local Heritage Asset Register

Meadows

HA594

Additional Description:

Heritage category:	Building
Asset type:	Houses
Original use:	
Current use:	
Currently occupied:	
Architect, style / material:	Possibly Marriot Ogle
Condition:	

Part of a group of heritage assets:

Yes

Associated with historical events or people:

Is it associated with any buried remains or archaeology? If so please describe:

How is it of importance to the local community? :

<b>Selection Panel Date:</b>	<b>Date added to the list:</b>
05/02/2019	

# BIG CITY TYRES Collin Street

## Local Heritage Asset Register

Castle

HA595





<b>Status:</b>	Recommendation to add
<b>Age:</b>	Early to Mid-20th Century
<b>Conservation Area:</b>	No
<b>Date added to the list:</b>	
<b>Condition:</b>	Good

### Assessment against Local Criteria

1. Good Local example of motoring heritage
2. Association as part of an important group of motor trade buildings
3. Good Design Quality

### Reason for Designation

The former Shippside's service garage is one of an important group of buildings which reflect the 1920s development of the city and the commercial influences of the time, providing the greatest concentration of motor vehicle sales and service facilities in the city. The survival of its Collin Street façade also makes a positive contribution to the streetscape.

-  Local List Proposal
-  Conservation Areas



### Description

G G Hardy 16/07/1926 Tall single bay garage brick parapet frontage with light weight metal framed truss roof behind. Recognised by English Heritage in the recently published 'Carscapes' 2012 for its intactness as original garage and archetypal layout. More info J Minnis 2017, Motor Dissertation and designation report

# BIG CITY TYRES Collin Street

## Local Heritage Asset Register

Castle

HA595

Additional Description:

Heritage category:	Building
Asset type:	Commercial
Original use:	
Current use:	Industrial
Currently occupied:	Yes
Architect, style / material:	G G Hardy
Condition:	Good

Part of a group of heritage assets:

Yes

Associated with historical events or people:

Is it associated with any buried remains or archaeology? If so please describe:

How is it of importance to the local community? :

<b>Selection Panel Date:</b>	<b>Date added to the list:</b>
05/03/2019	

# Cattle Market Tavern/ Market Hall Cattle Market Road

## Local Heritage Asset Register

### Meadows

HA596



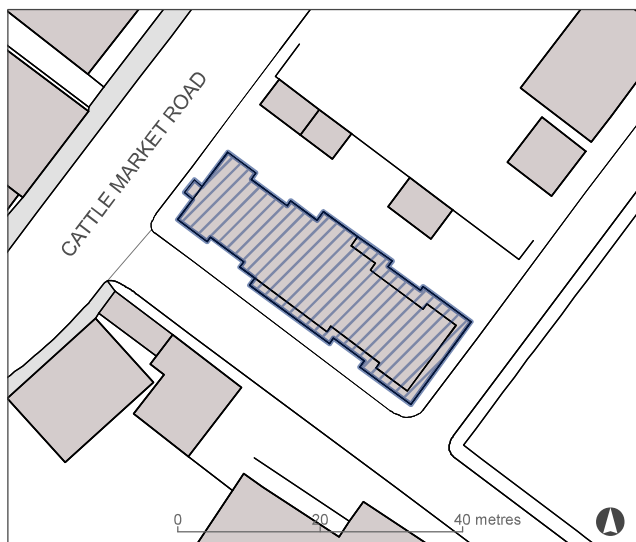
<b>Status:</b>	Recommendation to add
<b>Age:</b>	Victorian (1837-1901)
<b>Conservation Area:</b>	No
<b>Date added to the list:</b>	
<b>Condition:</b>	

### Assessment against Local Criteria

1. Age: pre 1914
2. Good aesthetic quality
3. Possibly associated with Marriot Ogle Tarbotton
4. Good example of a tavern servicing the Cattle Market

### Reason for Designation

#### Local List Proposal



### Description

Turn of the 20th century Cattle Market Tavern possibly designed by Mariott Ogle Tarbotton before his death in 1887, the city architect alongside the nearby grade II listed gate posts to the cattle market. Good aesthetic value and architectural details in a late Gothic Revival style. Similar detailing to The Lodge HA594. Formerly the Cattle Market tavern and now a cafe.

# Cattle Market Tavern/ Market Hall Cattle Market Road

## Local Heritage Asset Register

Meadows

HA596

Additional Description:

Heritage category:	Building
Asset type:	Commercial
Original use:	
Current use:	Restaurant or Cafe
Currently occupied:	
Architect, style / material:	Possibly Marriot Ogle
Condition:	

Part of a group of heritage assets:

Yes

Associated with historical events or people:

Is it associated with any buried remains or archaeology? If so please describe:

How is it of importance to the local community? :

<b>Selection Panel Date:</b>	<b>Date added to the list:</b>
05/02/2019	

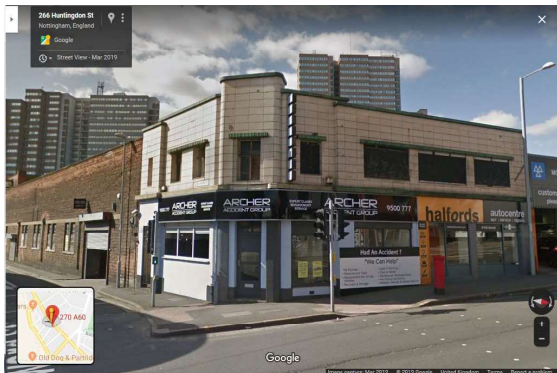


# 248-262 Huntingdon Street

## Local Heritage Asset Register

### St Ann's

HA603



<b>Status:</b>	Recommendation to add
<b>Age:</b>	Early to Mid-20th Century
<b>Conservation Area:</b>	No
<b>Date added to the list:</b>	
<b>Condition:</b>	Fair

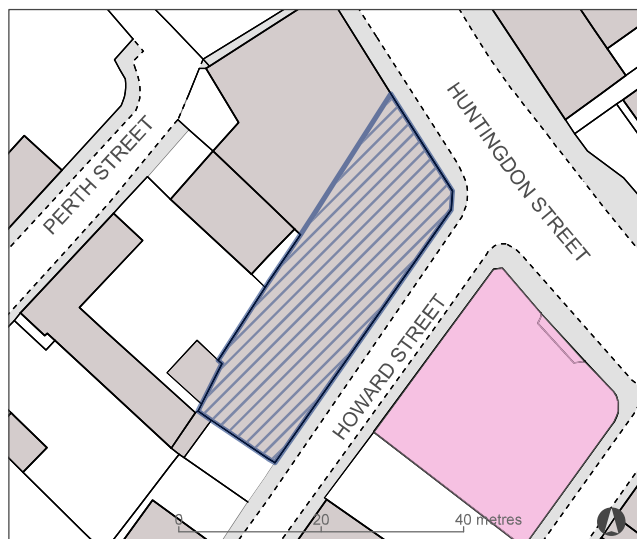
### Assessment against Local Criteria

1. Age: 1914-1960
2. High aesthetic quality Art Deco to the office frontage to Huntingdon Street with a more utilitarian garage to the rear
3. Good example from the first decades of the motor industry

### Reason for Designation

As a good example of an early motor industry building in an Art Deco style

-  Local List Proposal
-  Grade II Listed Building



### Description

1930's styled art deco garage on corner of Howard Street and Huntingdon Street. Adjacent to other garages on Huntingdon Street, built in an Art Deco style with white tiled façade and feature green tiled lintels and copings. Part is in use as Halfords but the main frontage is dis-used and several substantial rear bays used for storage. Motor Dissertation.

# 248-262 Huntingdon Street

## Local Heritage Asset Register

St Ann's

HA603

Additional Description:

Heritage category:	Building
Asset type:	Transport
Original use:	
Current use:	Industrial
Currently occupied:	Yes
Architect, style / material:	Art Deco
Condition:	Fair

Part of a group of heritage assets:

Yes

Associated with historical events or people:

Is it associated with any buried remains or archaeology? If so please describe:

How is it of importance to the local community? :

<b>Selection Panel Date:</b>	<b>Date added to the list:</b>
04/06/2019	

# 278-290 Huntingdon Street

## Local Heritage Asset Register St Ann's

HA608



<b>Status:</b>	Recommendation to add
<b>Age:</b>	Early to Mid-20th Century
<b>Conservation Area:</b>	No
<b>Date added to the list:</b>	
<b>Condition:</b>	Fair

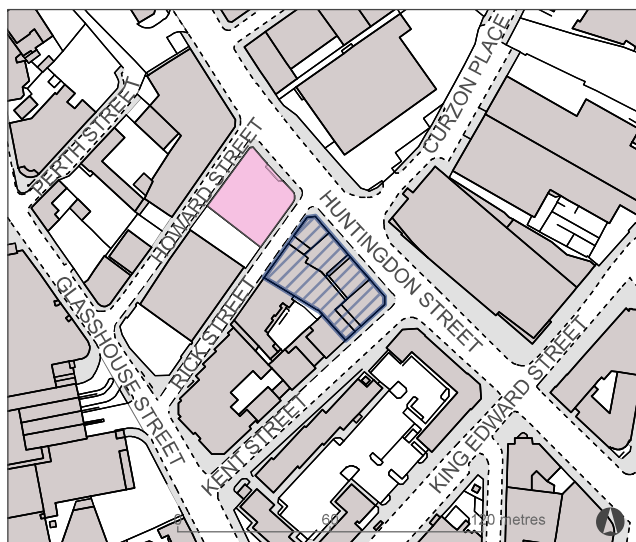
### Assessment against Local Criteria

1. Age: 1914-1960
2. High design quality Neo-Classical office frontage to Huntingdon Street wrapping around a more utilitarian garage to the rear
3. Good example from the first decades of the motor in

### Reason for Designation

As a good example of an early motor industry building in a Neo-Classical style

-  Local List Proposal
-  Grade II Listed Building



### Description

28/03/1930 - Salesshop & Garage - W Crane. Three storey building with large glazing frontage at street level to Rick Street garage to rear. Large building with two main street frontages, garage with light weight metal truss roof to rear behind series of shops and café. Extended considerably and still houses a motor bike sale and workshop. Motor Dissertation.

# 278-290 Huntingdon Street

## Local Heritage Asset Register

St Ann's

HA608

Additional Description:

Heritage category:	Building
Asset type:	Transport
Original use:	
Current use:	Industrial
Currently occupied:	Yes
Architect, style / material:	Neo-Classical
Condition:	Fair

Part of a group of heritage assets:

Yes

Associated with historical events or people:

Is it associated with any buried remains or archaeology? If so please describe:

How is it of importance to the local community? :

<b>Selection Panel Date:</b>	<b>Date added to the list:</b>
04/06/2019	

# Guy Birkin Factory

## Local Heritage Asset Register

### Berridge

HA619



<b>Status:</b>	Recommendation to add
<b>Age:</b>	Victorian (1837-1901)
<b>Conservation Area:</b>	No
<b>Date added to the list:</b>	
<b>Condition:</b>	

### Assessment against Local Criteria

1. Age: Late 19th Century
2. Asset type: Lace Factory
3. Good example of a Late 19th century Lace Factory
4. Of historic Value through the connection with the Birkin Family of Lace Makers who are of great significance to the history of Nottingham

### Reason for Designation

As a good example of a late 19th century Lace Factory adding to the knowledge of the Lace Industry within the city and associated with the Birkin Family of Lace Makers

### Local List Proposal



### Description

The Birkin Family's principal mill in Nottingham. Also known as Papyrus works and Palmerston House. Majority built before the First Edition OS Map and also depicted in a birds eye view during the King George V's visit to Birkin and Company in June 1914. Unclear whether the Birkin Family of Lace Makers built the factory or whether they took over the factory as part of the extension to their main works on Stanley Road (HA618). It was once one works with the factory to the east (HA619). Includes the historic buildings within the yard of the factory.

# Guy Birkin Factory

## Local Heritage Asset Register

Berridge

HA619

Additional Description:

Heritage category:	Building
Asset type:	Industrial
Original use:	
Current use:	
Currently occupied:	
Architect, style / material:	
Condition:	

Part of a group of heritage assets:

Yes

Associated with historical events or people:

Is it associated with any buried remains or archaeology? If so please describe:

How is it of importance to the local community? :

<b>Selection Panel Date:</b>	<b>Date added to the list:</b>
18/12/2018	

# Lock House and Meadow Lane Lock

## Local Heritage Asset Register

### Meadows

HA620



<b>Status:</b>	Recommendation to add
<b>Age:</b>	Victorian (1837-1901)
<b>Conservation Area:</b>	No
<b>Date added to the list:</b>	
<b>Condition:</b>	Good

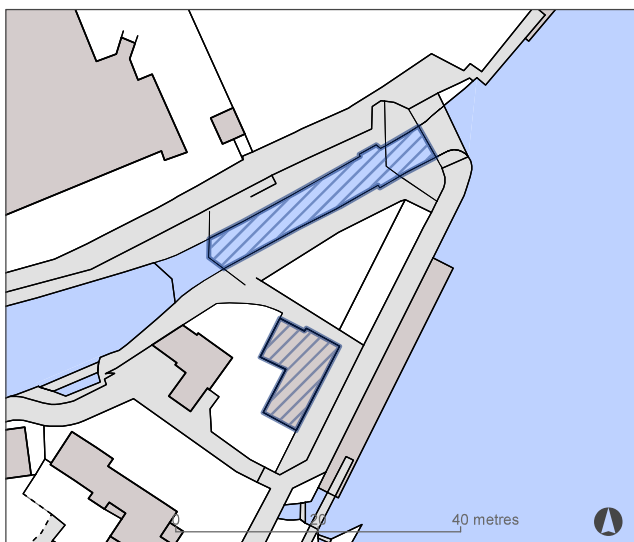
### Assessment against Local Criteria

1. 1840-1914
2. Entry point to the city section of the Nottingham-Beeston Canal
3. Physical and Historic Association with the 18th century canal

### Reason for Designation

A good example of a Victorian lock keepers cottage on the Nottingham-Beeston Canal

### Local List Proposal



### Description

Late 19th century lock keeper's house and Meadow Lane Lock (part of 1790s canal network). Red Brick with blue brick dressings, timber glazing bar sash windows and slate roofs.

# Lock House and Meadow Lane Lock

## Local Heritage Asset Register

### Meadows

HA620

Additional Description:

Heritage category:	Building
Asset type:	Transport
Original use:	
Current use:	House
Currently occupied:	Yes
Architect, style / material:	
Condition:	Good

Part of a group of heritage assets:

Associated with historical events or people:

Is it associated with any buried remains or archaeology? If so please describe:

How is it of importance to the local community? :

<b>Selection Panel Date:</b>	<b>Date added to the list:</b>
08/01/2018	